

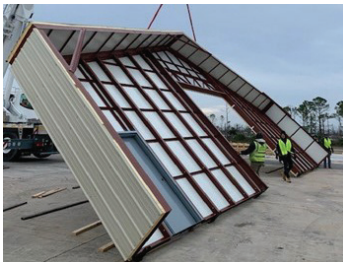


# THE *SUPERHUT*™

The panelized SuperHut can accommodate large widths, lengths, and heights. Rugged but easy to install, this system beats traditional metal buildings in speed, flexibility, durability and engineering.

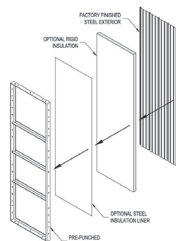


Ideal for warehouses, vehicle storage, maintenance, light manufacturing, fabrication shops, combat conditioning centers, or drive-thru inspections/sallyports.



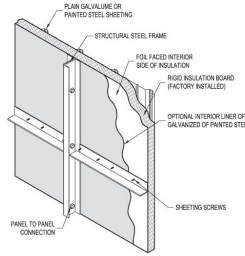
## FAST

This is modular construction at its best. With an installation time measured in days and weeks, not months and years, the SuperHut beats traditional metal buildings speed by a mile. Our straightforward system sets up just like our *BetterHut*, only bigger.



## RELOCATABLE

The 100% relocatable SuperHut, can be installed on an undeveloped surface with no concrete foundation pour. Our pre-framed panels include steel framing, insulation, and sheathing, so all parts break down and ship with ease.



## TURN-KEY

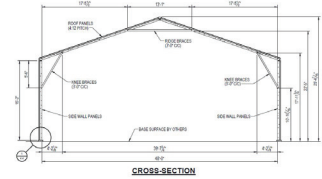
Like all of our systems, the SuperHut is designed, delivered, and installed by EBS. Our background as builders means we understand the design, engineering, and permitting process. We work with every customer to ensure the SuperHut is outfitted with the right windows, doors, electrical, HVAC, foundations, and other systems.



## + CASE STUDY: TYNDALL AFB REBUILD

EBS delivered four *SuperHuts* as part of the Tyndall AFB rebuild after hurricane Michael.

- ✓ Our team achieved an average time of 90 days from *order to building completion* for all four *SuperHuts*.
- ✓ Tyndall applications included equipment maintenance and fueling facilities.
- ✓ All buildings were outfitted with Expeditionary Electrical Systems, life safety systems, and building accessories including vehicle exhaust systems, power accommodation for maintenance equipment such as welders and tire machines.

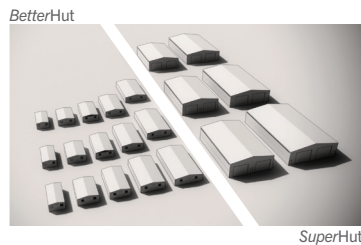


## + SIZING

### Base Sizes:

Up to 100' long and 55' wide  
OR go smaller with EBS *BetterHut*.

Plug and play multiple units for a tactical and consistent camp.



## + OPTIONS

Baseplate / Earth Anchors  
Supa-Trac Modular Floor  
Expeditionary Electrical System  
Expeditionary Cooling/Heating  
Ventilation  
Off-Grid Capabilities

## + COLORS



## + SPECIFICATIONS

Quality Process: ..... ISO 9001:2015, Structural design to IBC 2012  
Steel: ..... High grade A529-50 (50 KSI) steel rather than the industry standard A36 (36 KSI)  
Coating Options: ..... One-coat primer, enamel, hot-dip galvanized, powder coating, epoxy painting  
Sheeting Options: ..... Standard 3/4" Rib, Optional 1 1/4" PBR Rib  
Structural Steel Finish: ..... Red Primer  
Insulation Options: ..... Polyisocyanurate, Mineral Wool, optional steel liners

