

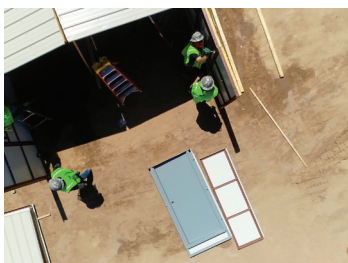


THE *BETTER*HUT™

The “Barracks Hut” upgrade that’s worthy of our troops. This complete building system is for buyers seeking speed, flexibility, and unmatched durability.



Ideal for barracks/dorms, classrooms, command centers, offices, workshops, and storage buildings.



FAST

Installed by a non-expert crew of 3-4 in one day, the Better Hut uses modular panels, factory-built in the good ol’ US of A. Our panels use standard nuts and bolts that can be found in any hardware store. A ladder, wrench, and a good pair of gloves is all you need to assemble. EBS expedites the design, procurement, and delivery process as your sole point of contact.



RELOCATABLE

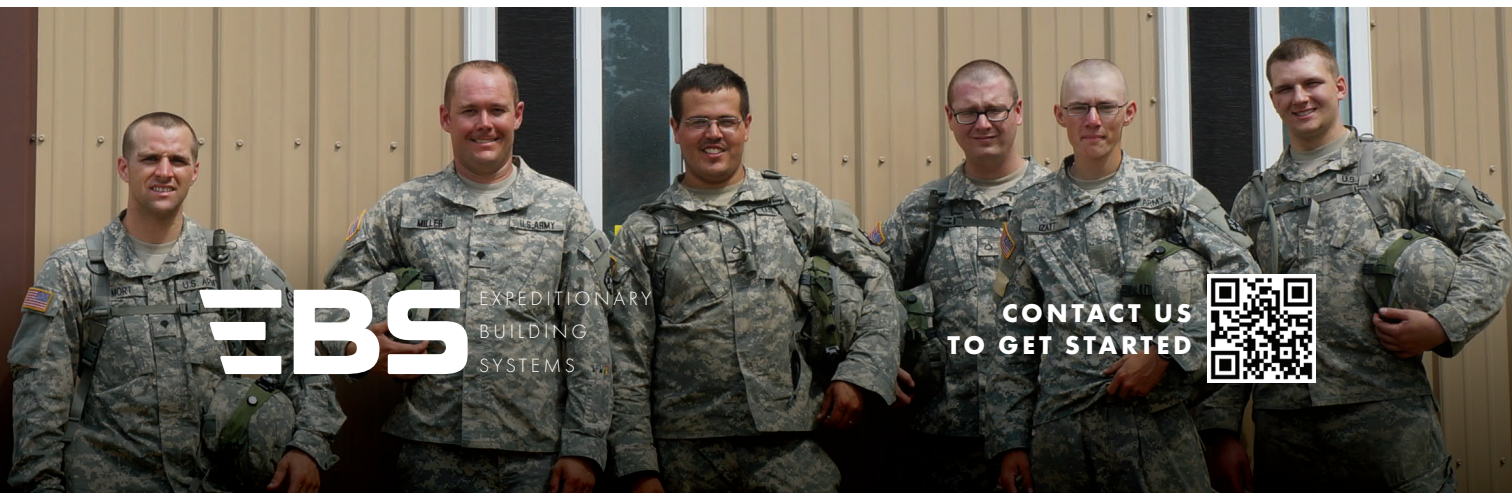
The Better Hut disassembles in hours and can be moved on a flatbed or standard shipping container. The entire system is hose-washable. EBS also provides:

- HVAC heating/cooling,
- Ventilation, • Electrical,
- Flooring, • Finish, and
- Foundation systems developed and manufactured for military use. Doors and windows are fully customizable.



TOUGH AS HELL

This is a premium modular structure, not a shed from your local big box store. The Better Hut modular panel design combines IBC-approved steel structure, insulation, and sheathing, with an interlocking panel assembly. Our structures are extremely rigid, with a roof truss and wall system designed to withstand 150 MPH winds.



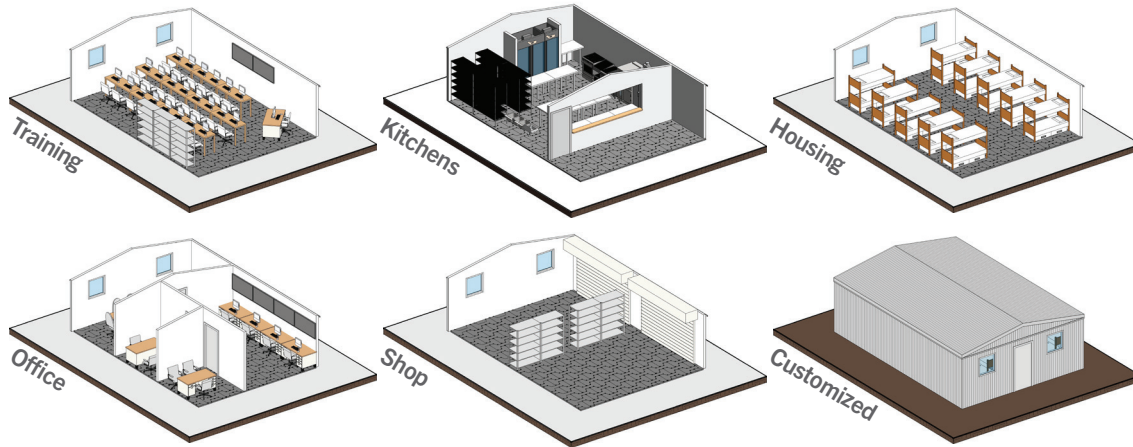
EBS

EXPEDITIONARY
BUILDING
SYSTEMS

**CONTACT US
TO GET STARTED**



+ TYPICAL APPLICATIONS

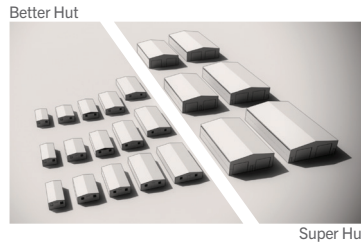


+ SIZING

Base Sizes:

15x15', 15x30', 21x30', 21x39'
OR go bigger with EBS Super Hut.

Plug and play multiple units for a tactical and consistent camp.



+ OPTIONS

Baseplate / Earth Anchors
Supa-Trac Modular Floor
Expeditionary Electrical System
Expeditionary Cooling/Heating
Ventilation
Off-Grid Capabilities

+ COLORS



+ SPECIFICATIONS

Quality Process: ISO 9001:2015, Structural design to IBC 2012
Roof Type: 2:12 Pitch Gable with Trusses at 3'-0" Center to Center
Exterior Sheeting: 29 Gauge and 3/4" Profile
Exterior Finish: 40 Year Painted Finish per Mfg. Standard Colors
Structural Steel Finish: Red Primer
Factory Installed Roof Insulation: 3" Rigid Polyiso Foam (R-20)
Factory Installed Roof Liner: 29 Ga. White Painted Flat Steel
Factory Installed Wall Insulation: 2" Rigid Polyiso Foam (R-13)
Factory Installed Wall Liner: 29 Ga. White Painted Flat Steel
Personnel Doors: 2 Ea. 3070 Door w/ mfr standard closer & lockset)
Windows: 8 Ea. 2'W x 3'H Vinyl Sliding Window

